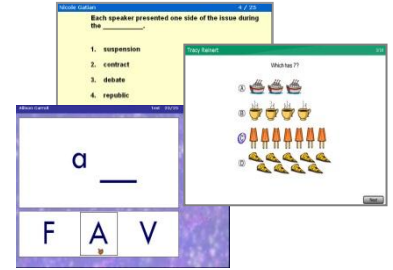


Key Questions STAR Enterprise Can Help You Answer



- STAR Reading™
- STAR Math™
- STAR Early Literacy™

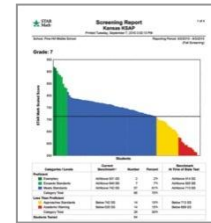
New STAR Enterprise™ assessments offer expanded skills-based testing, providing even more information to help you better understand student performance and improve instruction. STAR Enterprise assessments take about 15 minutes to administer and give you access to new tools and reports.



Which students are reaching benchmark and which need intervention?

Screening Report

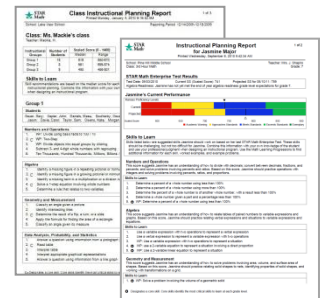
Use the **Screening Report** to help you plan for intervention and prioritize student need across an entire grade level or within a single class. The Screening Report allows you to consider student performance in relation to two types of benchmarks—RTI or state proficiency.



What are students ready to learn next?

Instructional Planning Report

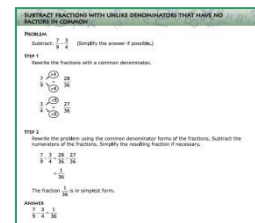
The **Student Instructional Planning Report** lists the math core skills and reading focus skills an individual student likely already knows as well as suggestions for skills that could be worked on next. To plan instruction for a class, create adjustable small groups of students in the software. Then print the **Class Instructional Planning Report**, which will identify the skills that are most critical for each group to learn. Use these reports with students performing above or below your established grade level curriculum to help you identify skills for differentiated instruction.



What prerequisite skills do students need to understand this lesson?

Learning Progressions

The **Learning Progressions** identify key vocabulary, concepts, and prerequisite skills that students need to know in order to learn a specific skill. The math tool provides Sample Problems and Worked Examples. The reading tool provides Teacher Activities and Sample Items. Use the Learning Progressions to gain a better understanding of the skills identified on the Instructional Planning reports.



Are students responding to the intervention?

Student Progress Monitoring Report

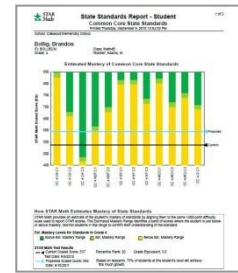
The **Student Progress Monitoring Report** plots a student's scores in relation to an individualized goal set by the teacher with the help of the STAR's Goal-Setting Wizard. By using the Student Progress Monitoring Report to track progress, you'll have actionable data to help you determine the effectiveness of the intervention.



Are students mastering state and Common Core State Standards?

State Standards Report

The **State Standards Report – Student** estimates current student mastery of state standards, and projects expected mastery levels by the end of the school year. This report can help you identify grade-level standards that may be more difficult for students to master. At the beginning of the school year, share this report with parents to provide a preview of the state standards students will be working on throughout the year. Customize this report to compare student performance to your state standards or to Common Core State Standards.



Are students on track to reach proficiency on the state test?

State Performance Report

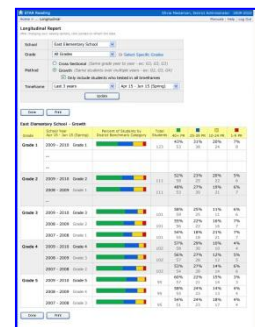
State Performance Reports help you determine whether students are on track to achieve proficiency on your state test. By testing students periodically prior to the state test, you have an early indication of which students may be at risk of not meeting your state proficiency requirements—in time to make instructional changes. The **State Performance Report – Student** shows the student's growth trajectory in relation to your state test proficiency threshold. The **State Performance Report – Class** shows the percent of students above and below the proficiency threshold and the median score for each of those groups.



Are students growing from year to year?

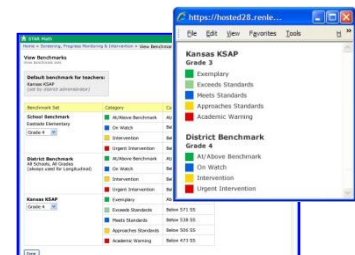
Longitudinal Reporting (Growth and Cross Sectional)

Longitudinal Reporting helps you spot trends in the data you have been accumulating over the years. You can look at your data in two ways. When you view growth data, you see how the same students scored from year to year—for example, how a group of students performed in third grade, fourth grade, and fifth grade. When you view cross-sectional data, you see how students in the same grade performed each year—for example, how this year's fifth graders compared to last year's fifth graders.



How do students compare to school, district, or state benchmarks?

Both the Screening Report and the Instructional Planning Report have customization options that enable you to view student performance in relation to school, district, or state benchmarks. * Cut scores are used to break down student scores into benchmark categories to help you better understand student performance based upon local and state expectations.



* Renaissance Learning™ links its STAR scale with each state test's scale to estimate which STAR scaled scores will fall into the state test's performance levels at the time of the state test. Reports using state benchmarks are available after the linking study is completed.